

Intra Prediction Algorithm for Video Frames of H.264

¹Dr. Anil Kumar C., ²Dr. Pradeep Kumar B.P., ³Venu K N, ⁴Prof Lavanya Vaishnavi D.A.

¹Associate Professor & HoD, Dept of ECE, R.L.Jalappa Institute of Technology., Doddaballapur,

²Associate Professor, Dept of ECE, HKBK College of Engg, Bangalore.

³Assistant professor, Department of Electronics and Telecommunication engineering, M S Ramaiah Institute of technology

⁴Assistant Professor, Dept of ECE, R.L.Jalappa Institute of Technology. Doddaballapur,

Abstract

Prediction is the process of duplicating the information contained in the macro block using previously coded data. H.264 supports intra prediction. It is having two types intra prediction 16x16, 4x4. In 16x16 having 4 modes and 4x4 having 9 modes of prediction. This prediction uses previously coded data of current frame to form prediction. The frames which are intra coded using intra prediction are called I-frames. This paper will give a brief description about different modes of intra prediction and this algorithm will give best intra prediction method by calculating the sum of absolute difference values for each mode of prediction.

Introduction

H.264/AVC uses intra prediction to encode I frame macroblocks and also P and B frame's macroblocks that have poor prediction result of motion estimation. Intra prediction utilizes the space dependency to compress the video. Intra prediction of H.264/AVC is conducted in special domain. There are two types of intra prediction methods supported for H.264/AVC luminance component. One is 4x4 mode which is having nine directional intra prediction modes [4] that is well suitable for macroblocks that has lots of details. And another one is 16x16 mode which is having four directional intra prediction modes suitable for macroblocks with smooth area. For chrominance components 8x8 prediction is used. The prediction is based on referring to neighboring samples of previously coded macroblocks.

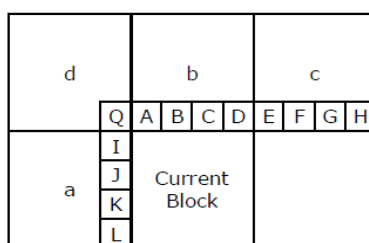


Figure 1 Reference samples of 4x4 luma prediction

4x4 Luma Prediction

When using 4x4 luma (luminance) prediction [4], each 16x16 macroblock is divided into sixteen 4x4 block. And each block a, above block B, above right block C and above left block D shows in figure 4.5[4] 13 samples that are labeled from A to L and Q in these blocks are used for prediction.

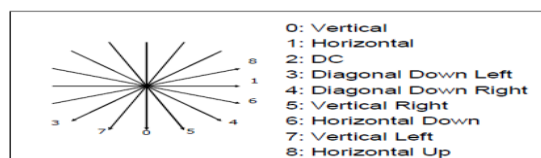


Figure 2 Predict directions of luma 4x4 prediction

There are nine prediction directions supported for 4x4 luma prediction indicated by arrows in figure 4.6. The suitable prediction angle of the following edge pattern in the block is selected. For example, vertical prediction implies that the predict block is constructed by above block b's samples A, B, C and D as illustrated in figure 4.8[4] left and is suitable to predict vertical edges in the block. So does other seven directions except the DC prediction. The only difference is that the constructional formula may be a little different for diagonal down left, diagonal down right, vertical right, vertical left, horizontal down, horizontal up but still using the samples labeled for A to L and Q. Unlike other predictions DC mode utilizes the average of all adjacency samples (A to D and I to L) to form the predict block. It is suitable for smooth area.

All prediction blocks are shown in the following figures (figure 4.8 prediction modes of 4x4 luma vertical and horizontal[4]). Each colour represents a different formula to form a predict sample. By completing computation for all the prediction directions, the encoder finds each direction's cost and outputs the one with minimum cost.

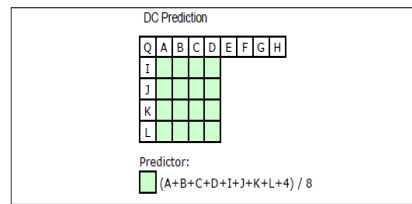


Figure 3 Prediction mode for 4x4 luma DC

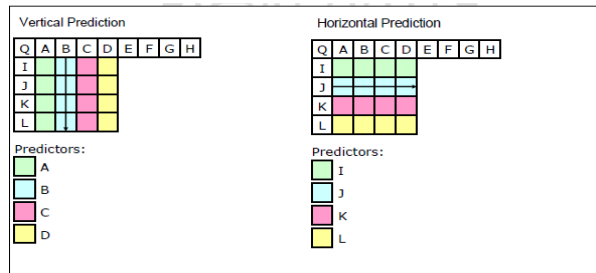


Figure 4 Prediction modes of 4x4 luma-vertical and horizontal

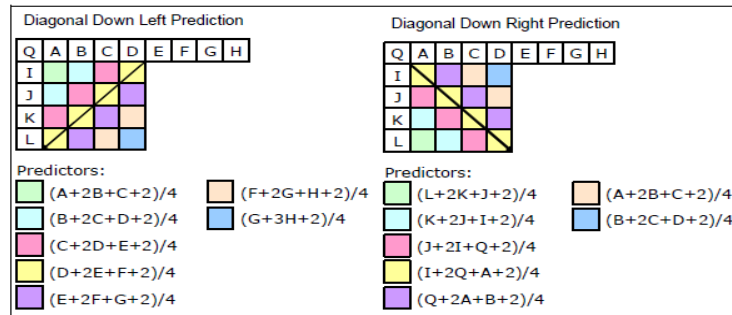


Figure 5 Prediction mode for 4x4 luma-diagonal down left/right

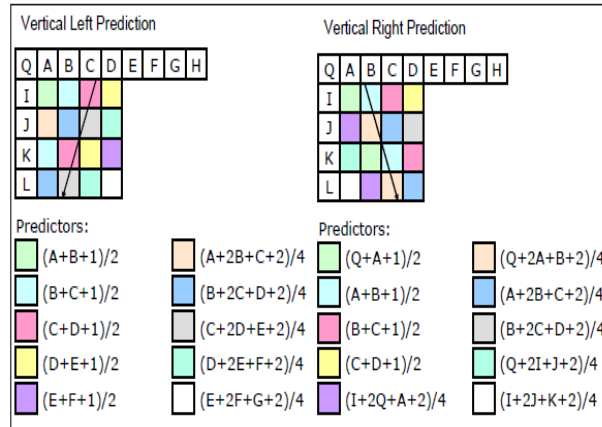


Figure 6 Prediction mode for 4x4 luma- vertical left/right

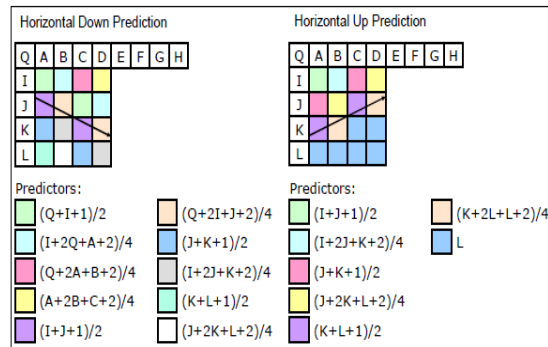


Figure 7 Prediction modes for 4x4 luma- horizontal down/up

16x16 Luma Prediction

Besides the 4x4 luma prediction [4], a 16x16 prediction mode is also used for luminance components and implemented in a similar way. 16x16 luma prediction[3] supports 4 prediction modes. They are vertical, horizontal, DC and plane predictions and it uses only above and left previously- coded macroblock to form the predict macroblock. Also the encoder calculates all the modes and chooses the one with the minimum cost. The four modes shown in the figure 4.12[3].

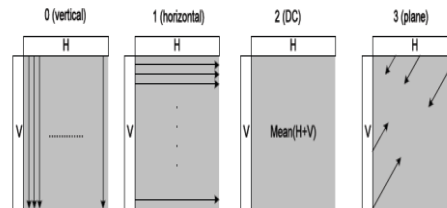


Figure 8 16x16 luma prediction modes

Modes 0,1 and 2 are computed as like 4x4 luma modes 0,1 and 2. The plane prediction is computed as follows, let us consider 16x16 plane mode as follows.

LT	T0	T1	T2	..	T15
L0	c[0, 0]	c[1, 0]	c[2, 0]	..	c[15, 0]
L1	c[0, 1]	c[1, 1]	c[2, 1]	..	c[15, 1]
.....					
L15	c[0,15]	c[1,15]	c[2,15] ..		c[15,15]

Here LT to L15 and T0 to T15 are already encoded samples and c [0, 0] to c [15, 15] are to be predicted samples using plane prediction.

Computing H' and V'

$$\begin{aligned}
 H' &= 1*(T8 - T6) + \\
 & 2*(T9 - T5) + \\
 & 3*(T10 - T4) + \\
 & 4*(T11 - T3) + \\
 & 5*(T12 - T2) + \\
 & 6*(T13 - T1) + \\
 & 7*(T14 - T0) + \\
 & 8*(T15 - LT) \\
 V' &= 1*(L8 - L6) + \\
 & 2*(L9 - L5) + \\
 & 3*(L10 - L4) + \\
 & 4*(L11 - L3) + \\
 & 5*(L12 - L2) + \\
 & 6*(L13 - L1) + \\
 & 7*(L14 - L0) + \\
 & 8*(L15 - LT)
 \end{aligned}$$

H and V are computed as,

$$H = (5*H' + 32) / 64$$

$$V = (5*V' + 32) / 64$$

The final process for filling in the 16X16 block is,

```

a = 16 * (L15 + T15 + 1) - 7*(V+H)
for (j = 0..15)
  for (i = 0..15)
    b = a + V * j + H * i
    c[i,j] = SATURATE_U8(b / 32)

```

Saturate_U8 means the result should be within unsigned 256.

8X8 Chroma Prediction

Prediction also applies on chrominance components. It is called 8X8 chroma predictions that are almost same as 16X16 luma prediction except the size of block changed from 16X16 to 8X8 and order of mode number is different. 8X8 chroma predictions also have 4 modes that are, DC (mode 0), Horizontal (mode 1), vertical (mode 2) and plane (mode3).

Example:

Consider an image matrix of size 16X16 as shown below

92	91	89	86	85	85	87	90	94	94	94	94	93	96	97	95
91	90	89	87	86	85	88	92	94	95	95	96	95	96	99	96
89	89	89	90	87	84	85	89	93	94	96	97	98	99	99	97
88	88	89	92	91	85	85	88	91	93	95	97	99	102	99	98
88	90	93	94	100	97	89	83	81	84	93	98	104	107	102	96
96	98	98	95	96	100	97	89	79	82	89	101	105	106	104	97
95	91	96	97	94	92	95	94	89	83	89	93	91	95	99	99
90	85	83	87	85	88	87	89	93	91	82	83	84	89	91	93
87	89	90	89	88	86	84	80	85	87	87	85	84	84	84	86
86	85	87	90	90	89	91	84	85	86	87	88	86	82	81	83
86	85	85	88	87	90	89	87	87	86	87	90	90	89	91	93
86	88	87	84	83	83	87	85	88	87	87	88	89	90	90	88
88	84	85	81	83	84	87	90	91	91	92	93	90	84	81	79
85	83	83	81	79	80	83	86	87	91	95	95	96	86	82	82
85	84	84	84	85	85	87	89	90	93	96	98	97	97	87	86
87	87	87	88	87	87	89	91	91	96	100	100	100	98	94	89

Divide the matrix in to 4X4 blocks as shown below

$\begin{pmatrix} 92 & 91 & 89 & 86 \\ 91 & 90 & 88 & 86 \\ 89 & 89 & 89 & 88 \\ 89 & 87 & 88 & 93 \end{pmatrix}$	$\begin{pmatrix} 84 & 84 & 87 & 90 \\ 85 & 85 & 86 & 93 \\ 86 & 83 & 83 & 89 \\ 91 & 85 & 84 & 87 \end{pmatrix}$	$\begin{pmatrix} 93 & 95 & 93 & 94 \\ 94 & 95 & 95 & 96 \\ 93 & 95 & 97 & 97 \\ 90 & 92 & 94 & 97 \end{pmatrix}$	$\begin{pmatrix} 92 & 95 & 97 & 96 \\ 97 & 97 & 100 & 96 \\ 97 & 100 & 101 & 97 \\ 99 & 103 & 100 & 97 \end{pmatrix}$
$\begin{pmatrix} 88 & 89 & 92 & 94 \\ 96 & 98 & 99 & 96 \\ 94 & 88 & 97 & 96 \\ 91 & 84 & 82 & 86 \end{pmatrix}$	$\begin{pmatrix} 101 & 96 & 89 & 83 \\ 96 & 102 & 98 & 88 \\ 93 & 91 & 97 & 94 \\ 85 & 88 & 86 & 88 \end{pmatrix}$	$\begin{pmatrix} 80 & 84 & 93 & 98 \\ 78 & 81 & 87 & 102 \\ 89 & 83 & 89 & 92 \\ 92 & 92 & 81 & 83 \end{pmatrix}$	$\begin{pmatrix} 104 & 107 & 102 & 98 \\ 107 & 109 & 105 & 98 \\ 91 & 94 & 101 & 99 \\ 83 & 88 & 91 & 94 \end{pmatrix}$
$\begin{pmatrix} 85 & 92 & 90 & 89 \\ 85 & 85 & 88 & 91 \\ 84 & 84 & 85 & 87 \\ 87 & 87 & 86 & 84 \end{pmatrix}$	$\begin{pmatrix} 87 & 87 & 83 & 79 \\ 90 & 90 & 92 & 84 \\ 87 & 91 & 89 & 86 \\ 81 & 82 & 87 & 85 \end{pmatrix}$	$\begin{pmatrix} 84 & 89 & 87 & 84 \\ 84 & 85 & 87 & 89 \\ 86 & 85 & 85 & 89 \\ 88 & 88 & 87 & 88 \end{pmatrix}$	$\begin{pmatrix} 84 & 83 & 84 & 86 \\ 86 & 83 & 80 & 82 \\ 91 & 89 & 92 & 94 \\ 89 & 90 & 90 & 88 \end{pmatrix}$
$\begin{pmatrix} 87 & 83 & 85 & 80 \\ 85 & 83 & 82 & 81 \\ 86 & 85 & 83 & 83 \\ 87 & 87 & 88 & 89 \end{pmatrix}$	$\begin{pmatrix} 82 & 84 & 87 & 90 \\ 80 & 79 & 83 & 85 \\ 84 & 84 & 88 & 90 \\ 88 & 88 & 88 & 90 \end{pmatrix}$	$\begin{pmatrix} 91 & 91 & 92 & 93 \\ 86 & 91 & 96 & 96 \\ 90 & 93 & 96 & 97 \\ 90 & 98 & 101 & 101 \end{pmatrix}$	$\begin{pmatrix} 89 & 82 & 81 & 79 \\ 97 & 86 & 82 & 82 \\ 97 & 97 & 88 & 85 \\ 99 & 98 & 94 & 88 \end{pmatrix}$

Now consider the first top left 4X4 block,

92 91 89 86
 91 90 88 86
 89 89 89 88
 89 87 88 93

For the first 4X4 block, there is no previously coded data available and hence, the neighboring pixels are assumed to be 128

128 128 128 128 128 128 128 128
128 92 91 89 86
128 91 90 88 86
128 89 89 89 88
128 89 87 88 93

Therefore the predicted block will become

128 128 128 128
 128 128 128 128
 128 128 128 128
 128 128 128 128

This is the reconstructed block of the above mentioned 4X4 block

92 90 89 **86**
 91 89 88 **86**
 89 89 88 **89**
89 87 88 93

The last column and last row samples which are bolded above the original block are now available for the prediction of next 4X4 block. Therefore the neighboring samples available for the second top left 4X4 block are as shown below

128 128 128 128 128 128 128 128
86 84 84 87 90
86 85 85 86 93
89 86 83 83 89
93 91 85 84 87

According to the availability of neighboring samples the modes available are selected for prediction. For the above 4X4 block only left column of samples are available. For the above block the available modes are, DC, diagonal down left, vertical left and horizontal up.

DC prediction:

$$P = (86 + 86 + 89 + 93 + 128 + 128 + 128 + 128 + 4) / 8$$

$$P = 108$$

Where 4 is added as a rounding factor.

Therefore prediction block will become,

108 108 108 108
 108 108 108 108
 108 108 108 108
 108 108 108 108

$$SAD = \sum_{\text{for all pixels in MB}} |source\ pixel - predicted\ pixel|$$

SAD for the above predicted block = 346

Vertical prediction:

The vertical predicted block =

128 128 128 128
 128 128 128 128
 128 128 128 128

128 128 128 128

SAD = 666

Horizontal prediction:

Horizontal predicted block =

86 86 86 86

86 86 86 86

89 89 89 89

93 93 93 93

SAD = 58

Diagonal down left prediction:

In this mode the pixels are calculated according to the equations mentioned earlier.

That is,

(0,0) pixel is calculated as $(A + 2B + C + 2) / 4 = (128 + 2(128) + 128 + 2) / 4 = 128$

In the same way the pixel value is calculated according to the equations mentioned earlier.

The prediction block =

128 128 128 128

128 128 128 128

128 128 128 128

128 128 128 128

SAD = 666

Vertical left Prediction:

In this mode also the predicted pixels are calculated according to the equations mentioned earlier.

(0,0) pixel is calculated as $(A + B + 1) / 2 = (128 + 128 + 1) / 2 = 128$

Like this all the pixel values are calculated.

Predicted block =

128 128 128 128

128 128 128 128

128 128 128 128

128 128 128 128

SAD = 666

Horizontal up prediction:

In this mode also the pixel values are predicted according to the values mentioned earlier.

The predicted block =

86 87 88 89

88 89 91 92

91 92 93 93

93 93 93 93

SAD = 71

Therefore the best prediction is the one which gives least SAD value. In this case horizontal prediction gives least SAD value compared to all other modes. The horizontal predicted block is subtracted from the source block to get residual block. The residual block is then transformed, quantized, inverse transformed and scaled to reconstruct the source block. The transform process is explained in the later section.

The reconstructed block is given by.

83 84 87 **90**

85 85 86 **91**

86 82 82 **89**

91 85 84 87

The samples which are bolded are now available for prediction of next 4×4 block.

In the same way 16×16 luma and 8×8 chroma prediction are performed.

Example:

Consider a residual block of 1st top left 4×4 block in intra prediction.

Forward transformation:

$$X = \begin{bmatrix} -36 & -37 & -39 & -42 \\ -37 & -38 & -40 & -42 \\ -39 & -39 & -39 & -40 \\ -39 & -41 & -40 & -35 \end{bmatrix}$$

$$Y = \begin{bmatrix} 1 & 1 & 1 & 1 \\ 2 & 1 & -1 & -2 \\ 1 & -1 & -1 & 1 \\ 1 & -2 & 2 & -1 \end{bmatrix} \cdot \begin{bmatrix} -36 & -37 & -39 & -42 \\ -37 & -38 & -40 & -42 \\ -39 & -39 & -39 & -40 \\ -39 & -41 & -40 & -35 \end{bmatrix} \cdot \begin{bmatrix} 1 & 2 & 1 & 1 \\ 1 & 1 & -1 & -2 \\ 1 & -1 & -1 & 2 \\ 1 & -2 & 1 & -1 \end{bmatrix}$$

$$Y = \begin{bmatrix} -623 & 19 & 3 & 2 \\ 2 & 56 & -18 & 8 \\ 5 & -9 & 7 & -2 \\ 1 & 3 & -9 & 4 \end{bmatrix} \otimes \begin{bmatrix} 13107 & 8066 & 13107 & 8066 \\ 8066 & 5243 & 8066 & 5243 \\ 13107 & 8066 & 13107 & 8066 \\ 8066 & 5243 & 8066 & 5243 \end{bmatrix} \cdot \frac{1}{2^{15+\left(\frac{QP}{6}\right)}}$$

$$Y = \begin{bmatrix} -125 & 2 & 1 & 0 \\ 0 & 4 & -2 & 1 \\ 1 & -1 & 1 & 0 \\ 0 & 0 & -1 & 0 \end{bmatrix}$$

⊗ indicates scalar multiplication.

For QP= 12

$$Y = \begin{bmatrix} -62 & 1 & 0 & 0 \\ 0 & 2 & -1 & 0 \\ 0 & -1 & 1 & 0 \\ 0 & 0 & -1 & 0 \end{bmatrix}$$

For QP= 30

$$Y = \begin{bmatrix} -8 & 0 & 0 & 0 \\ 0 & 0 & 0 & 0 \\ 0 & 0 & 0 & 0 \\ 0 & 0 & 0 & 0 \end{bmatrix}$$

Inverse transformation(for QP=6)

$$Z = \begin{bmatrix} 1 & 1 & 1 & 0.5 \\ 1 & 0.5 & -1 & -1 \\ 1 & -0.5 & -1 & 1 \\ 1 & -1 & 1 & -0.5 \end{bmatrix} \cdot \left(\begin{bmatrix} -125 & 2 & 1 & 0 \\ 0 & 4 & -2 & 1 \\ 1 & -1 & 1 & 0 \\ 0 & 0 & -1 & 0 \end{bmatrix} \otimes \begin{bmatrix} 10 & 13 & 10 & 13 \\ 13 & 16 & 13 & 16 \\ 10 & 13 & 10 & 13 \\ 13 & 16 & 13 & 16 \end{bmatrix} \times 2^{(QP/6)} \right) \cdot \begin{bmatrix} 1 & 1 & 1 & 1 \\ 1 & 0.5 & -0.5 & -1 \\ 1 & -1 & -1 & 1 \\ 0.5 & -1 & 1 & -0.5 \end{bmatrix}$$

$$Z = \begin{bmatrix} -36 & -38 & -39 & -42 \\ -37 & -39 & -40 & -42 \\ -39 & -39 & -40 & -39 \\ -39 & -41 & -40 & -35 \end{bmatrix}$$

Therefore reconstructed block = predicted block + residual block

$$P = \begin{bmatrix} 128 & 128 & 128 & 128 \\ 128 & 128 & 128 & 128 \\ 128 & 128 & 128 & 128 \\ 128 & 128 & 128 & 128 \end{bmatrix}$$

$$\text{Reconstructed block} = \begin{bmatrix} 128 & 128 & 128 & 128 \\ 128 & 128 & 128 & 128 \\ 128 & 128 & 128 & 128 \\ 128 & 128 & 128 & 128 \end{bmatrix} + \begin{bmatrix} -36 & -38 & -39 & -42 \\ -37 & -39 & -40 & -42 \\ -39 & -39 & -40 & -39 \\ -39 & -41 & -40 & -35 \end{bmatrix}$$

$$= \begin{bmatrix} 92 & 90 & 89 & 86 \\ 91 & 89 & 88 & 86 \\ 89 & 89 & 88 & 89 \\ 89 & 87 & 88 & 93 \end{bmatrix}$$

System implementation

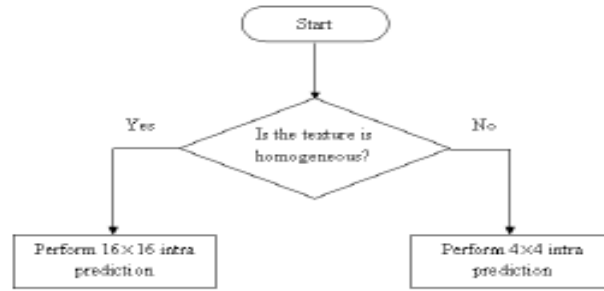


Figure 9 Flow chart for prediction of 4X4 or 16X16

the image block 16x16 checked for its texture if the texture is homogeneous 16x16 prediction method is best for prediction if the texture is variable in nature 4x4 prediction method is best to form prediction. In 4x4 intra prediction the block is first checked whether neighboring pixels are available to form prediction if they are available the prediction is formed by using all available 9 modes and the best prediction mode is selected according to the SAD value. If neighboring pixels are not available the values of neighboring pixels are assumed to be 128 and DC mode is used for prediction.

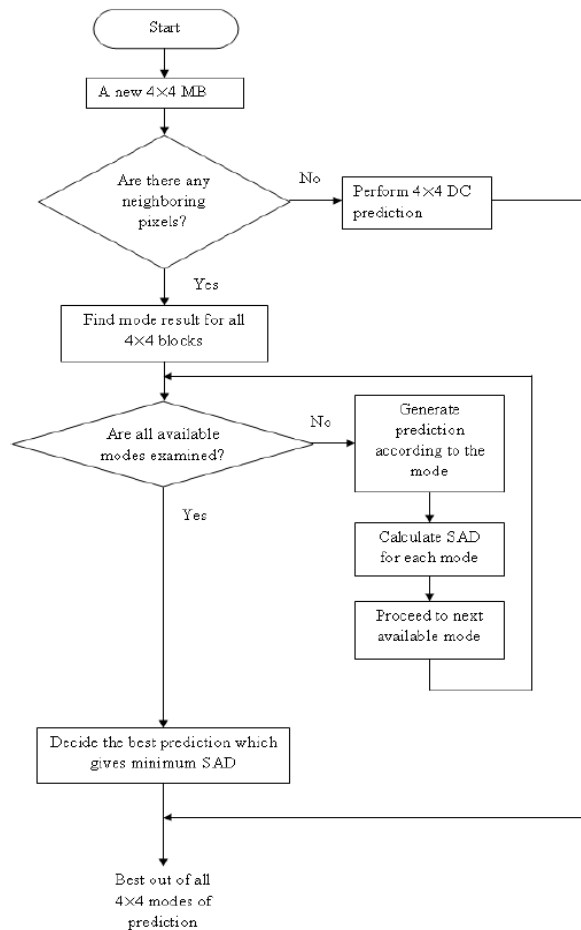


Figure 10 Flowchart for intra luma 4x4 prediction

Conclusion

In 4X4 intra prediction the prediction is found for all available modes and the best prediction is taken according to the sum of absolute difference value for different modes. The mode which gives minimum sad value is selected as a best prediction mode. using of I-frames(intra coded) improve the quality of video. In intra prediction 4x4 is used to form best prediction in variable texture.16x16 is used to form best prediction in homogeneous texture. For better quality all the available modes are used which increase code complexity. Selected modes are used to decrease the code complexity.

References

1. Thomas Wiegand, Gary J. Sullivan ,Ajay Luthra ,“Overview of the H.264/AVC Video Coding Standard”, IEEE transactions on circuits and systems for video technology, vol. 13, no. 7, july 2003.
2. Iain E. G. Richardson, Vcodex white paper on “A Technical Introduction to H.264 / AVC”, Vcodex Ltd 2002-2011.
3. Iain E. G. Richardson, Vcodex white paper on “H.264 / AVC Intra Prediction” Vcodex Ltd 2002-2011.
4. Hung-wei cheng , a thesis on “Mode decision of H.264/AVC Motion Estimation with RDO”, National Cheng Kung University, july 2005
5. Iain E. G. Richardson, Vcodex white paper on “H.264 / AVC Transform and Quantization” Vcodex Ltd 2002-2011.
6. Iain E. G. Richardson, Vcodex white paper on “H.264 / AVC CABAC entropy coding”, Vcodex Ltd 2002-2011.
7. A white paper on “H.264 video compression standard”, Axis communications, 2008
8. Iain E. G. Richardson, “H.264 and MPEG-4 video compression”, John Wiley & Sons Ltd publications 2003.
9. Gary J, Pankaj Topiwala and Ajay Luthra “The H.264/AVC Advanced Video Coding Standard: Overview and Introduction to the Fidelity Range Extensions”, SPIE Conference August, 2004
10. Iain E. G. Richardson, “The H.264 advanced video compression standard”, second edition, John Wiley & Sons Ltd publications 2003.